

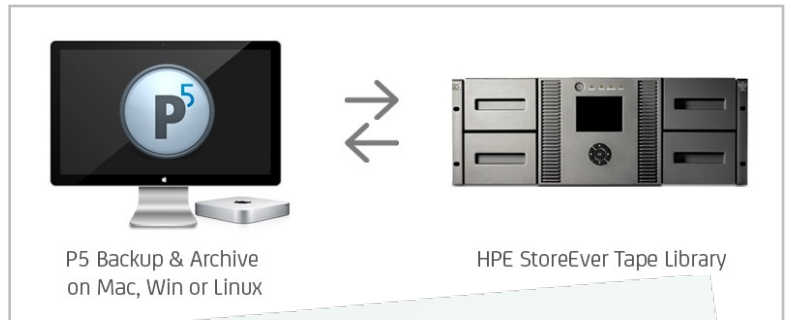
## Secure Media Backup and Archive on LTO Tape Archiware P5 Backup, P5 Archive & HPE Tape Libraries

In a world where digital assets are essential for day-to-day business, data protection should be given top priority. While hard disks might be considered safe and accessible storage, when it comes to long-term data security, no media comes close to LTO tape. And in a multi-slot, automated library, using LTO tape could not be more convenient.

To achieve maximum security for your media assets or company data, the ideal setup is a mixture of mid-term and long-term protection: Backup (data duplication) for quick recovery in case of user errors or hardware failure and Archiving (data migration) to keep important data safe for years.

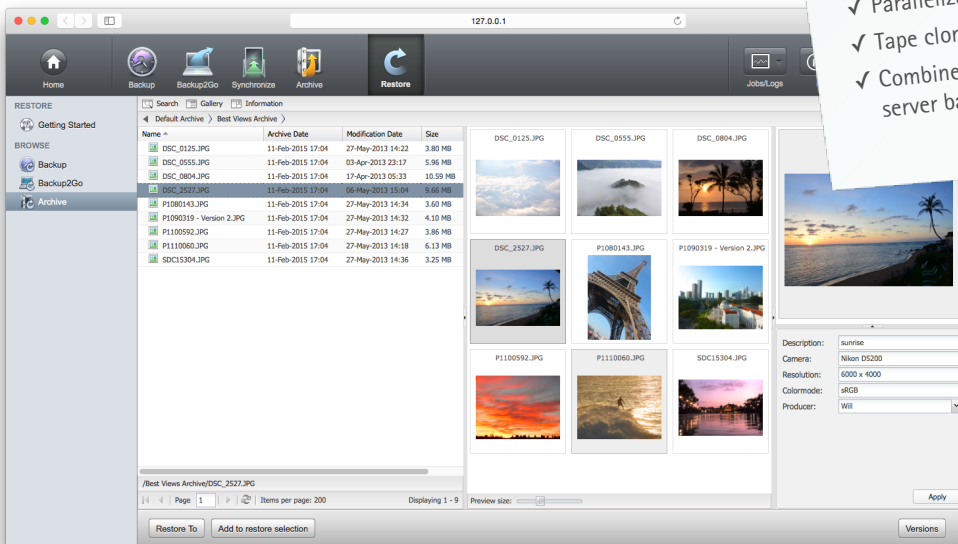
The **Archiware P5 Software Suite** offers modules for both usecases: **P5 Backup** creates full or incremental backup copies, **P5 Archive** migrates data onto LTO tape. The tape cloning feature creates duplicate tape sets to allow offsite storage.

All data can be restored using the P5 interface. Browse the Archive catalogue with previews and metadata and easily recover material from the tape archive.



### P5 Archive Advantages:

- ✓ Browse Media with Previews/Proxies
- ✓ Search Metadata in configurable catalogue
- ✓ One Solution for all Platforms (Mac, Win, Linux)
- ✓ User Restore
- ✓ Long-term storage, certified for 30 years
- ✓ Parallelization for speed and scalability
- ✓ Tape cloning for maximum security, off-site storage
- ✓ Combine with P5 Backup for daily server backup



Use your **HPE StoreEver** tape library with both modules simultaneously – simply split the tapes into dedicated pools for Backup and Archive.

Your P5 installation will even grow with your business: licenses can be expanded when you add a new library or an extension module.

### Options, Configurations, Interfaces...

We are happy to advise: [www.hpe.com](http://www.hpe.com)  
[www.archiware.com](http://www.archiware.com)

[sales@archiware.com](mailto:sales@archiware.com)

